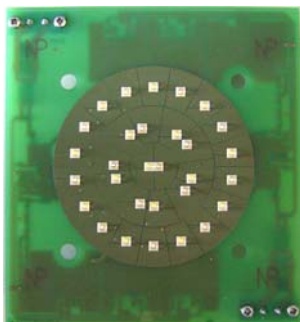


Product sheet

LED Signal bicolor SIGLED15-15 white/blue



Article-Number: 501584

Short description:

- Bicolor LED Signal module (white/blue)
- Use i.e. in switch position indicator
- Constant light intensity about a wide input voltage range
- Diameter illuminated area approx. 70mm

Specification

Number of LED white	15
Number of LED blue	15
Dimensions (W x H x D)	98 mm x 106 mm x 30 mm
Diameter illuminated area	approx. 70 mm
Weight	approx. 48 g
Connector mechanical locked	Typ Combicon 2-pole
Rated input voltage by constant light intensity	21.0 V DC to 30 V DC
Power input by nominal line voltage Control one color only (constant current)	(white) approx. 106mA (blue) approx. 106mA
Light wavelength white by CIE1931	P ₁ (0.287, 0.296) P ₂ (0.330, 0.373) P ₃ (0.296, 0.276) P ₄ (0.338, 0.360) Typ.: x=0.31, y=0.32
Light wavelength blue (dominant)	Typ. 453 nm
Temperature range	-30°C to +70°C
Reverse voltage protection electrical	by protecting diode
Reverse voltage protection mechanical	by connector
Overvoltage protection	Disengage from 45 V to 60 V

Attachment:

<i>Article-Number</i>	<i>Description</i>
501005	Connecting & interface module for switch position indicator

All information provided in this product sheet refers to the current conditions and may be subject to change.