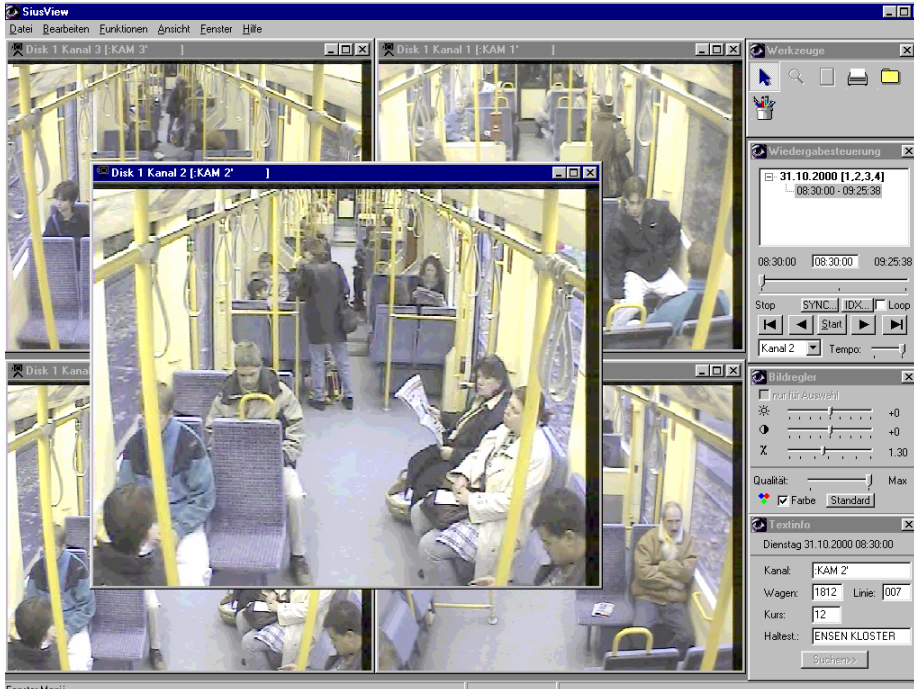


Product sheet

SIUSView Analysis Software



Article Number: 300101

Short description:

SIUSView features analysis software which can analyse and process the recorded SIUS image data. SIUSView can be run on a standard computer.

Specification

System software:	Windows 2000 Windows XP
Recording period:	The recording periode is displayed separately
Replay speed:	The replay speed can be freely adjusted One or more cameras can be replayed simultaneously
Zoom function:	Individual parts of the image can be enlarged using the zoom function.
Search criteria:	Camera, date, time, car number, line, direction, name of stop, alarm
Loop function:	Available and freely adjustable
Printing:	All images including all relevant data can be printed on any standard printer.
Image processing:	Contrast and brightness can be adjusted in the programme. For further image processing, the image can be exported to any selected image processing programme.
Data storage:	Image sequences can be stored in original format and as AVI files. Individual images can be stored in <i>bmp</i> or <i>jpg</i> formats.



Product sheet

SIUSView Analysis Software

Minimum system requirements:

Processor:	Pentium IV
Pulse frequency:	2.4 GHz
RAM:	512 MB
Graphics card:	The graphics card must support directX 64 MB memory 1024 x 768 resolution 16 Bit color depth
Mass memory:	60 GB hard drive and CD burner
Keyboard:	AT keyboard
Mouse:	PS2 mouse
Screen:	17" SVGA
Readcontroller for recording drive:	IDE recording (SIUS III)

All information provided in this product sheet refers to the current conditions and may be subject to change.